

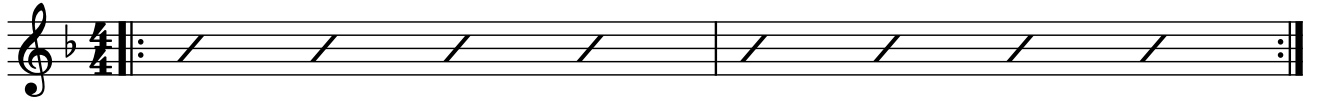
# For Flux

Jason Keiser

## INTRO

: ad infinitum - cue out

Gm11



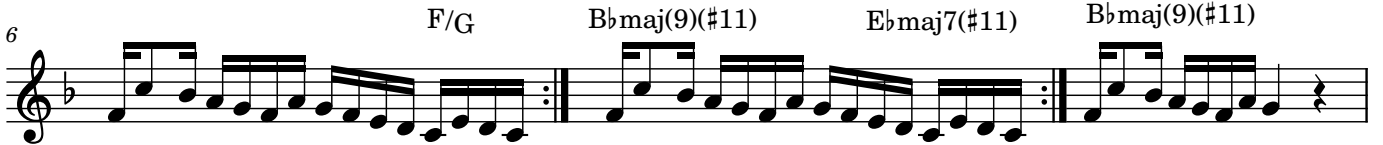
### A



### 1.3.

### 2.

### 4.



### B



2 **A**

17 Gm11 Fmaj(9)

19 Bbmaj(9)(#11) 1. F/G

2. N.C. UNIS.

21

**END ALL SOLOS WITH THIS LICK**